

2021

ANNUAL REPORT



TABLE OF CONTENTS



**President's
Message**



**COVID-19: Research
and initiatives**



**Strategic
Plan**



**Global
Advocacy**



**Organization
& Structure**



**Education
& Training**



**Publications
& communications**



Congresses



Nurturing Leaders (YES)



Financials



**Guiding
Principles**

*Click a number
to go to a section*

*Click contents
to this page*



Contents



@llaeWeb



www.ilae.org/reports



President's Message

President's Message

2021 was an unprecedented year in many ways. As we continued with another year of the pandemic, it left us with the realization that we would need to find ways to coexist with SARS-CoV2 and the changes it wrought. We adapted, innovated, and persisted as our educational efforts continued as all-virtual gatherings. Twelve months, three congresses, 21 webinars, and more than 300 Zoom meetings later, the year ended with many unknowns, but a great deal of hope.

This report is a summary of our time and effort in 2021 as a global team of hundreds of volunteers and staff.

Thanks to all of you for your dedication.



J Helen Cross
ILAE President

COVID-19: Research and Initiatives

COVID-19: Research and Initiatives

As we entered the second year of the pandemic, we continued our efforts to provide information about COVID-19 and the vaccines through the website and social media. A full one-third of pageviews on our website went to COVID-19 pages, and 6 of the top 10 most-visited pages were focused on the virus and the vaccines.

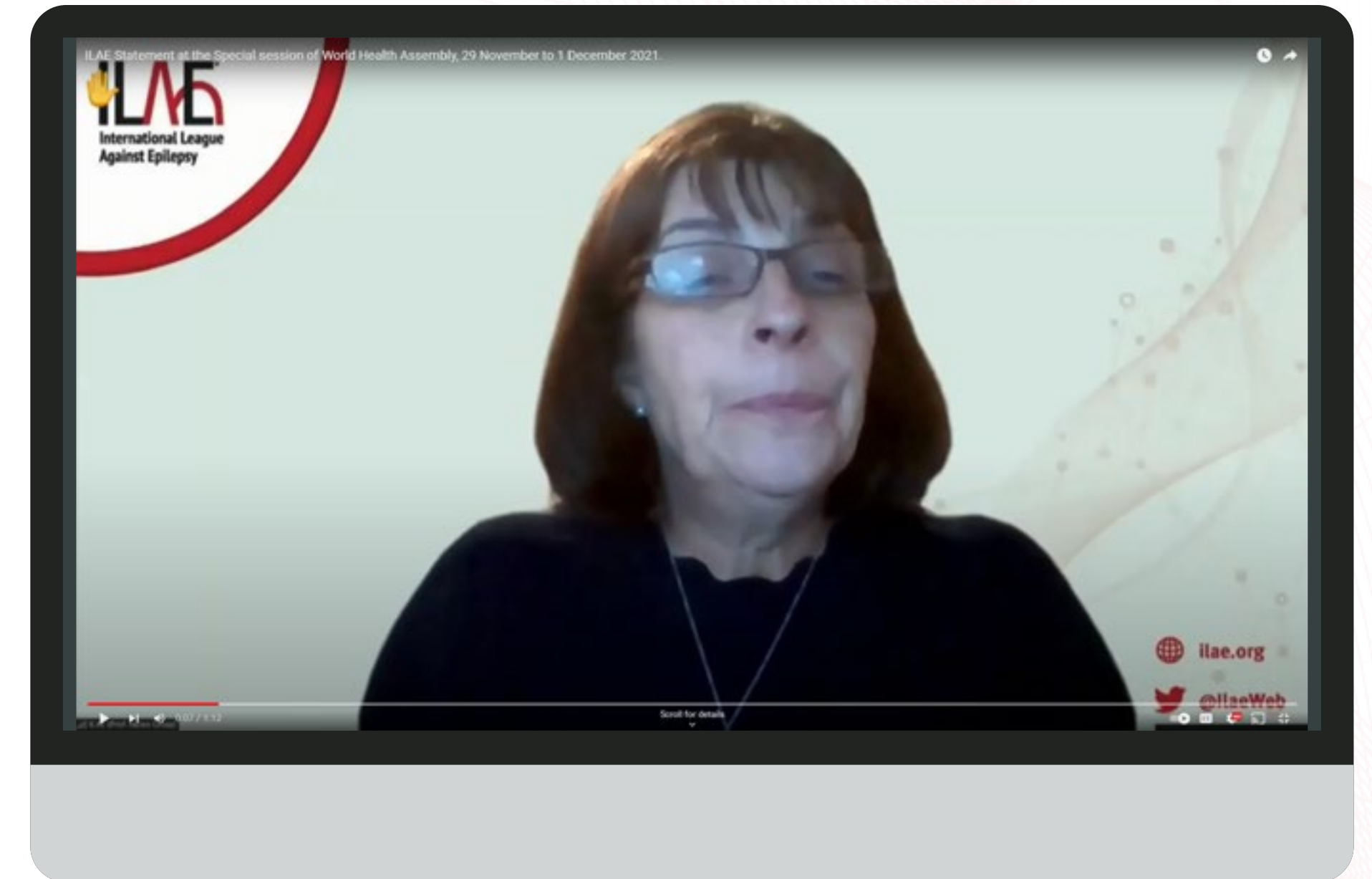
With the International Federation of Clinical Neurology, we published a joint consensus statement on the importance of access to epilepsy monitoring units during the pandemic. The ILAE COVID-19 Task Force published manuscripts on the impact of the pandemic on epilepsy research, and a joint manuscript (with the Telemedicine Task Force) on epilepsy care during the pandemic.

The Task Force awarded its second round of research awards on COVID-19 and epilepsy, to researchers in Latin America, North America, Europe, and Asia-Oceania.

President Helen Cross delivered a statement on behalf of people with epilepsy at the special session of the World Health Assembly that focused on COVID-19. She reported that 33% of people with epilepsy were not able to access medication during the initial wave of the pandemic, and that 25% of people with epilepsy reported increased seizure frequency during the pandemic. President Cross advocated for greater attention to including essential epilepsy treatment in pandemic preparedness, as well as increased investment in telehealth.

33%
of people with epilepsy
were not able to access
medication

25%
of people with epilepsy
reported increased seizure
frequency during the
pandemic



ILAE Statement at the Special session of World Health Assembly, 29 November to 1 December 2021

Strategic Plan



Strategic Plan

A series of retreats in 2020 culminated in a new version of ILAE's Strategic Plan in 2021. The plan is meant to provide direction until 2030.

The strategy includes five goals:

- Serve health professionals as the premier international resource for current and emerging standards and best practices
- Support health professionals worldwide to enhance their knowledge and skills in the prevention, diagnosis, treatment, and care of epilepsy
- Advocate for epilepsy as a public health imperative
- Promote research and innovation for epilepsy
- Ensure the long-term financial and organizational viability of ILAE

Guiding principles and three cross-cutting areas – events & congresses, communications, and publications – support these goals.

Although the aspiration is for the Strategic Plan to remain a guiding document for the next decade, multiple drivers of change make it likely that we will regularly review and refresh it as necessary.



Strategic Plan

GOAL 01 Standards and Best Practice

GOAL 02 Professional Education and Development

GOAL 03 Advocacy

1.1 Systematically build and maintain a body of knowledge for best practice in epileptology	2.1 Provide world-wide, accessible education and skill development for the prevention, diagnosis, and treatment of epilepsy	3.1 Determine needs and priorities in epilepsy care, education and research globally
1.2 Articulate international standards of practice for the prevention, diagnosis and treatment of epilepsy and addressing co-morbidities	2.2 Achieve and maintain globally recognized status as an accrediting body for Continuing Professional Development and Medical Education in the field of epilepsy	3.2 Interact with stakeholders and governments to promote epilepsy care, education and research as a core components of universal health coverage
1.3 Adapt and make accessible standards and guidelines appropriate to different epidemiological and clinical contexts	2.3 Enhance professional leadership competencies through education, coaching and mentorship	3.3 Work in partnership with stakeholders, including people with epilepsy, to address stigma, exclusion and discrimination
Cross Cutting: Events and Congresses		
E1 Provide in person and virtual opportunities to develop consensus on best practice and promote guidelines and standards	E2 Provide in person and virtual opportunities to share professional experiences and build professional support	E3 Provide in person and virtual opportunities to promote messages, and build capacities and connections to support global advocacy
Cross Cutting: Publications		
P1 Maintain the position of ILAE journals as leading authoritative sources for dissemination of knowledge, international evidence-based guidelines and standards	P2 Continue to build the educational content of ILAE journals	P3 Continue to utilize ILAE journals to increase visibility of ILAE activities as well as articulate needs and advocate for appropriate action
Cross Cutting: Communications		
C1 Use media, social media and the ILAE websites to promote standards, guidelines and best practice	C2 Use media, social media and the ILAE websites to promote educational activities and events, and to enhance learning	C3 Use media, social media and the ILAE websites to increase the visibility of ILAE activities as well as articulate needs and advocate for appropriate action

Strategic Plan

GOAL 04 Organizational and Financial Viability

GOAL 05 Research and Innovation

4.1 Strengthen engagement and participation by health professionals in ILAE activities and governance

5.1 Facilitate scientific and research collaborations, including in low resource settings

4.2 Ensure effective and efficient management of ILAE activities and resources

5.2 Develop and promote ethical and scientifically robust methodologies to support research in epileptology

4.3 Ensure effective financial management including expansion and diversification of income generation and funding

5.3 Embrace digital transformation and support the incorporation of relevant innovations into clinical practice

Cross Cutting: Events and Congresses

E4 Ensure financial viability of in person and virtual events whilst ensuring high quality, active participation and global reach

E5 Provide in person and virtual opportunities for networking, sharing of research and innovative and forward leaning discussion

Cross Cutting: Publications

P4 Continue to utilize Epigraph and Newsletter to strengthen internal communication within the ILAE and across the membership

P5 Support translation and implementation of research advances through open access publication of rigorous basic and clinical research

Cross Cutting: Communications

C4 Use of social media and the ILAE websites to raise awareness about ILAE activities, enhance networking and strengthen our sense of community

C5 Use of media, social media and the ILAE websites to promote research and innovation and to support digital transformation



Global Advocacy

Global Advocacy

90%

of all people with epilepsy are aware of their diagnosis as a treatable brain disorder

80%

of people with epilepsy have access to appropriate, affordable, safe anti seizure medicines

70%

of those treated achieve adequate seizure control

Draft Intersectoral Global Action Plan on Epilepsy and Other Neurological Disorders (IGAP)

In November 2020, the Seventy-third World Health Assembly (WHA) adopted resolution WHA 73.10 on Global actions on epilepsy and other neurological disorders to develop an Intersectoral global action plan on epilepsy and other neurological disorders (IGAP) in consultation with Member States. The action plan will address the challenges and gaps in providing care and services for people with epilepsy and other neurological disorders that exist worldwide and ensure a comprehensive, coordinated response across sectors.

ILAE and IBE jointly advocated for a 90-80-70 cascade target for epilepsy to be included in the IGAP to inspire a decade of action and achieve meaningful improvements in care and treatment for all of the 50 million plus people who live with epilepsy globally.

The WHO Secretariat prepared a revised draft of the Intersectoral global action plan on epilepsy and other neurological disorders (EB150/7 Annex 7) that was submitted for review at the 150th session of the Executive Board in January 2022. The ILAE position statement given at the session commended the inclusion of Target 5.1 addressing epilepsy services and Target 5.2 tackling discrimination, remarking that epilepsy is highly treatable – and both stigma and exclusion are preventable. ILAE noted that all ten target areas in the draft IGAP are relevant to epilepsy and recommended that all use the phrase ‘epilepsy and other neurological disorders’ to align with Resolution WHA 73.10.

The background features a grid of stacks of hexagonal tiles. Each tile is a light red color and contains a dark red silhouette of a person. The tiles are arranged in a pattern that recedes into the distance, creating a sense of depth. The overall color palette is monochromatic, consisting of various shades of red.

Organization & Structure

Organization & Structure

ILAE Executive Committee 2021-2025



J Helen Cross
President



Edward Bertram
Secretary General



Alla Guekht
Treasurer



Roberto Caraballo
Vice President



Sam Wiebe
Past President



Eugen Trinko
Strategic Advisor



Julie Hall
Executive Director



Jo Wilmshurst
Chair, ILAE Africa



John Dunne
Chair, ILAE Asia & Oceania



Ghaieb Aljandeel
Chair, LAE East
Mediterranean



Matthew Walker
Chair, ILAE Europe



Mario Vanegas
Chair, ILAE Latin America



Jaideep Kapur
Chair, ILAE North America



Ingmar Blümcke
Chair, Education Council



Jean Gotman
Chair, Publication Council



Nathalie Jette
Chair, Standards &
Best Practice Council



Francesca Sofia
IBE President



Gus Baker
IBE Secretary General



Graeme Shears
IBE Treasurer

Organization & Structure

ILAE Councils

Councils are oversight and coordinating entities with a specific purpose, based on functions defined by the League's Mission and Strategic Plan. They are "standing" (ongoing) entities responsible for long and short-term planning, for policy review, and for recommending a course of action to the Executive Committee.



J Helen Cross
Chair

Congress Council enhances the quality, relevance and profile of ILAE congresses, steps needed to stay abreast of technical and educational advances in congresses, and financial sustainability of ILAE congresses.



Ingmar Blümcke
Chair

Education Council formulates strategies to enhance the quality, relevance and profile of ILAE educational activities, steps needed to stay abreast of technical and educational advances, and regarding financial sustainability of ILAE education activities.



Alla Guekht
Chair

Global Advocacy Council formulates strategies to enhance the quality, relevance, and profile of ILAE global advocacy activities, steps needed to stay abreast of needs and opportunities for Global and Regional Advocacy initiatives, and prioritization of activities.



Jean Gotman
Chair

Publication Council recommends strategies to enhance the quality, relevance, and profile of ILAE publications, staying abreast of technical and publishing innovations, maintaining financial sustainability of ILAE publications, guiding policy for ILAE guidelines, recommendations, position papers and other reports.



Nathalie Jette
Chair

Standards and Best Practice Council was recently created with the aim of overseeing all aspects of ILAE's work on the development, effective dissemination and efforts at implementing clinical practice guidelines and best practices standards in epilepsy. The Council is currently recruiting volunteers for its task forces.

Organization & Structure

Commissions and Task Forces

Each of the 13 commissions has multiple task forces.

What commissions and task forces do:

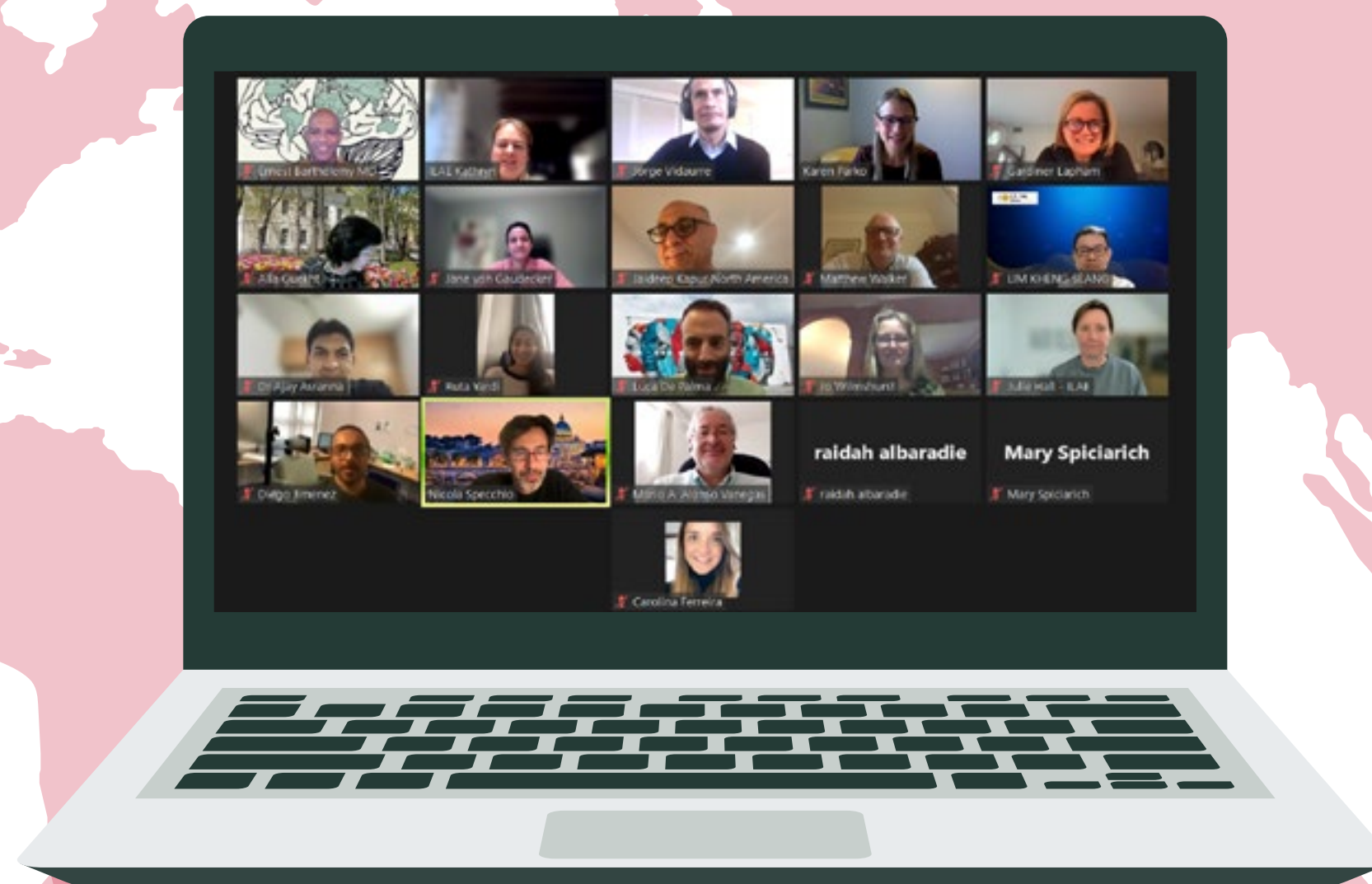
- Organize and present sessions at congresses
- Formulate consensus statements and clinical practice guidelines
- Collaborate with other professional organizations, as well as governmental agencies
- Develop statements of current practice and systematic reviews
- Prepare and deliver teaching courses
- Conduct international surveys and report on the results

Commissions:

- Big data (new)
- Career Development (new)
- Climate Change
- Diagnostic Methods
- Epidemiology
- Genetics
- ILAE-Lancet Neurology
- Medical Therapies
- Neurobiology
- Pediatrics
- Psychiatry
- Surgical Therapies
- Terminology

Selected commission accomplishments in 2021:

- Published a consensus statement about the importance of access to epilepsy monitoring units during the COVID-19 pandemic (Diagnostic Methods)
- In collaboration with 4EU+ University Alliance, prepared the [International Elective Course On the Pathogenesis of Epilepsy](#) (Neurobiology)
- Completed a systematic review of the current literature on the global cost of epilepsy, including methods for estimating the cost of epilepsy, as well as global and regional estimates of the cost of epilepsy. Results were reported at the 2021 International Epilepsy Congress (Epidemiology)
- Expanding website information and planning to collaborate on an epidemiological and ethnobotanical study of natural epilepsy treatment in Rwanda (Medical Therapies)
- Developing genetic literacy papers on familial focal epilepsies, genetic counseling, self-limiting familial epilepsy syndromes and SUDEP. An [associated website](#) allows readers to assess their knowledge after reading (Genetics)
- Published results of an international survey investigating barriers to psychological treatment in people with epilepsy (Medical Therapies)



ILAE Epilepsy Project database meeting

Organization & structure

Selected ILAE publications:

ILAE's task forces, commissions, councils, and chapters publish guidelines, reports, and research on all aspects of epilepsy.

Standard procedures for the diagnostic pathway of sleep-related epilepsies and comorbid sleep disorders: an EAN, ESRS and ILAE-Europe consensus review

Nobili L et al., *European Journal of Neurology*

Automated seizure detection using wearable devices: A clinical practice guideline of the International League Against Epilepsy and the International Federation of Clinical Neurophysiology

Beniczky S et al., *Epilepsia*

FDA safety warning on the cardiac effects of lamotrigine: An advisory from the Ad Hoc ILAE/AES Task Force

French JA et al., *Epilepsia Open*

Importance of access to epilepsy monitoring units during the COVID-19 pandemic: Consensus statement of the International League against epilepsy and the International Federation of Clinical Neurophysiology

Beniczky S et al., *Epileptic Disorders*

ILAE Neuroimaging Task Force Highlight: harnessing optimized imaging protocols for drug-resistant childhood epilepsy

Larivière S et al., *Epileptic Disorders*

Epilepsy care during the COVID-19 pandemic (Task forces on COVID-19 and telemedicine)

Cross JH et al., *Epilepsia*

Use of suggestive seizure manipulation methods in the investigation of patients with possible psychogenic nonepileptic seizures-An international ILAE survey

(PNES Task Force)

Gras A/Wardrope A et al., *Epilepsia Open*

The initial impact of the SARS-CoV-2 pandemic on epilepsy research (COVID-19 Task Force)

Volkers N et al., *Epilepsia Open*

Managing depression and anxiety in people with epilepsy: A survey of epilepsy health professionals by the ILAE

Psychology Task Force

Gandy M et al., *Epilepsia Open*

The ILAE classification of seizures and the epilepsies: Modification for seizures in the neonate. Position paper by the ILAE Task Force on Neonatal Seizures

Pressler RM et al., *Epilepsia*



Organization & Structure

ILAE Staff and Support



Julie Hall
Executive Director



Linda Beza
Director of Finance



Denis McEvoy
Congress Director



Priscilla Shisler
Director of Engagement
& Education



Laurie Beninsig
Managing Editor, *Epilepsia*® &
Epilepsia Open®



Eva Biesel
ILAE Academy Consultant



Gus Egan
Chapter & Membership
Development Manager



Briana El-Naggar
Registration Officer



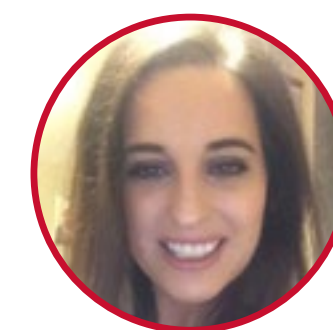
Oliver Gubbay
Managing Editor, *Epileptic Disorders*



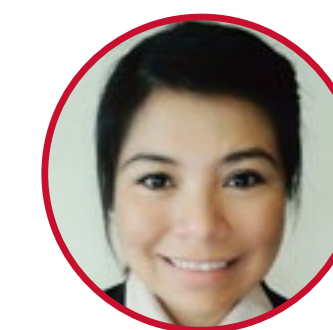
Cecelia Hartsell
Program Manager,
Congress & Events



Kathryn Hodgson
Program & Partner
Development Manager



Andrea Hunt
Program Manager,
Congress & Events



Alma Paéz Lynch
Program Manager,
Congress & Events



Alicia McNeely
Web & Social Media Manager



Jessica Norvell
Administrative Assistant, US



Gwen O'Brien
Administrative Assistant, Ireland



Haitian Power
Finance Manager



Finola Quinn
Congress Development Manager



Jason Ryan
Digital and Design Officer



Siobhain Shannon
Program Manager,
Congress & Events



Nancy Volkens
Communications Manager



ILAE ACADEMY

Level 1

Self-paced e-learning, including case-based modules, covering basic principles in clinical epileptology

Result:
Level 1 certificate



Level 1
ENTRY



Self
Assessment



CME

Level 2

Blended learning: self-paced, patient-centered e-learning combined with adaptive learning formats and tutored courses (online or face-to-face) to build proficiency in epileptology

Result:
Level 2 certificate



Level 2
PROFICIENCY



VIREPA
Highly interactive, e-moderated online courses on EEG, epilepsy & sleep, neuroimaging.

Result:
Certificate of Completion

Education & Training

Resources

Supplemental reading and learning, including the interactive ILAE diagnostic manual, educational review papers, guidelines and other publications related to the course content.



Contents



@ilaeWeb



www.ilae.org/reports

Education & Training

Education is a primary focus for ILAE, as we aim to bring knowledge and expertise in epilepsy to health professionals around the world.

In 2021, ILAE built on its progress from previous years, growing the online ILAE Academy in anticipation of a 2022 release of Level 2 content, the proficiency level in epileptology. Work continues on a teaching curriculum in epileptology for primary care physicians.

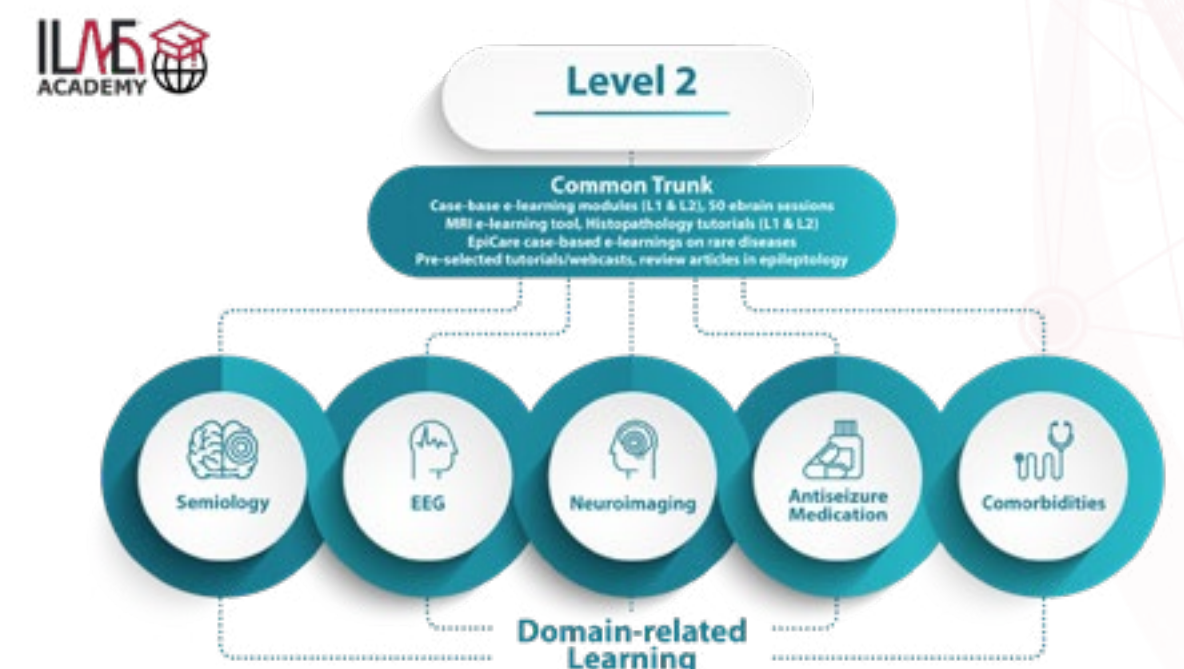
In other educational areas, ILAE reviewed 14 endorsement requests for international teaching activities, and endorsed 9 of them. Educational webinar series continued around the world in multiple languages, attracting thousands of viewers.

ILAE Academy

The ILAE Academy enjoyed its first full year online. The first phase of the program provides training to non-specialist health care providers through case-based modules, histopathology tutorials, microlearning sessions and other opportunities.

In late 2021, the Academy began a migration to an upgraded learning platform. A phased launch is planned for 2022 with the platform supporting both Level 1 (non-specialist) and Level 2 (specialist) training, as well as the tutored VIREPA courses.

Since its launch in 2020, the Academy has recorded more than 1 million views and attracted more than 2,000 active users from 62 countries. The Academy has issued 5,925 certificates for e-learning module completion. User surveys show that the program is reaching a diverse range of professionals who often have little prior experience in epileptology or access to on-site training.

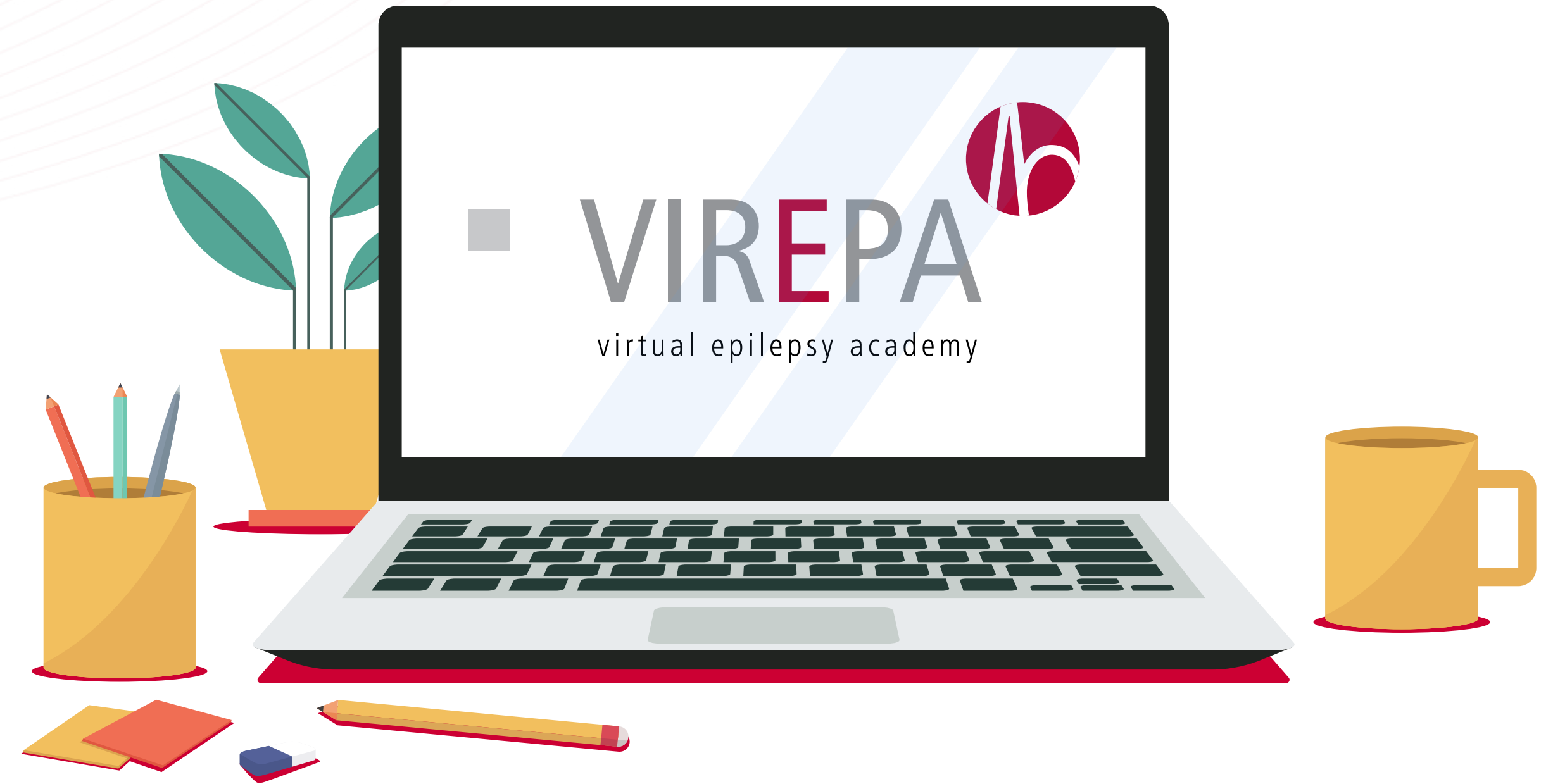


Education & Training

VIREPA

ILAE's VIRTUAL Epilepsy Academy (VIREPA) began as an initiative of the Commission on European Affairs and was formally incorporated into ILAE educational activities in 2009. VIREPA offers six-month, practice-oriented courses primarily intended for specialist clinicians, with some courses being appropriate for basic scientists.

Participant evaluations are consistently and overwhelmingly positive regarding new knowledge gained and the relevance of the courses to professional practice.



Primary-care physician education

This year, ILAE released an online survey to assess the need for a teaching curriculum for primary care providers. It received nearly 800 responses, and the results indicated an unmet need for this type of education. An ILAE task force developed a teaching curriculum for primary care in epileptology, following the ILAE curriculum established in 2019. The draft curriculum has been reviewed by a large group of ILAE leaders.

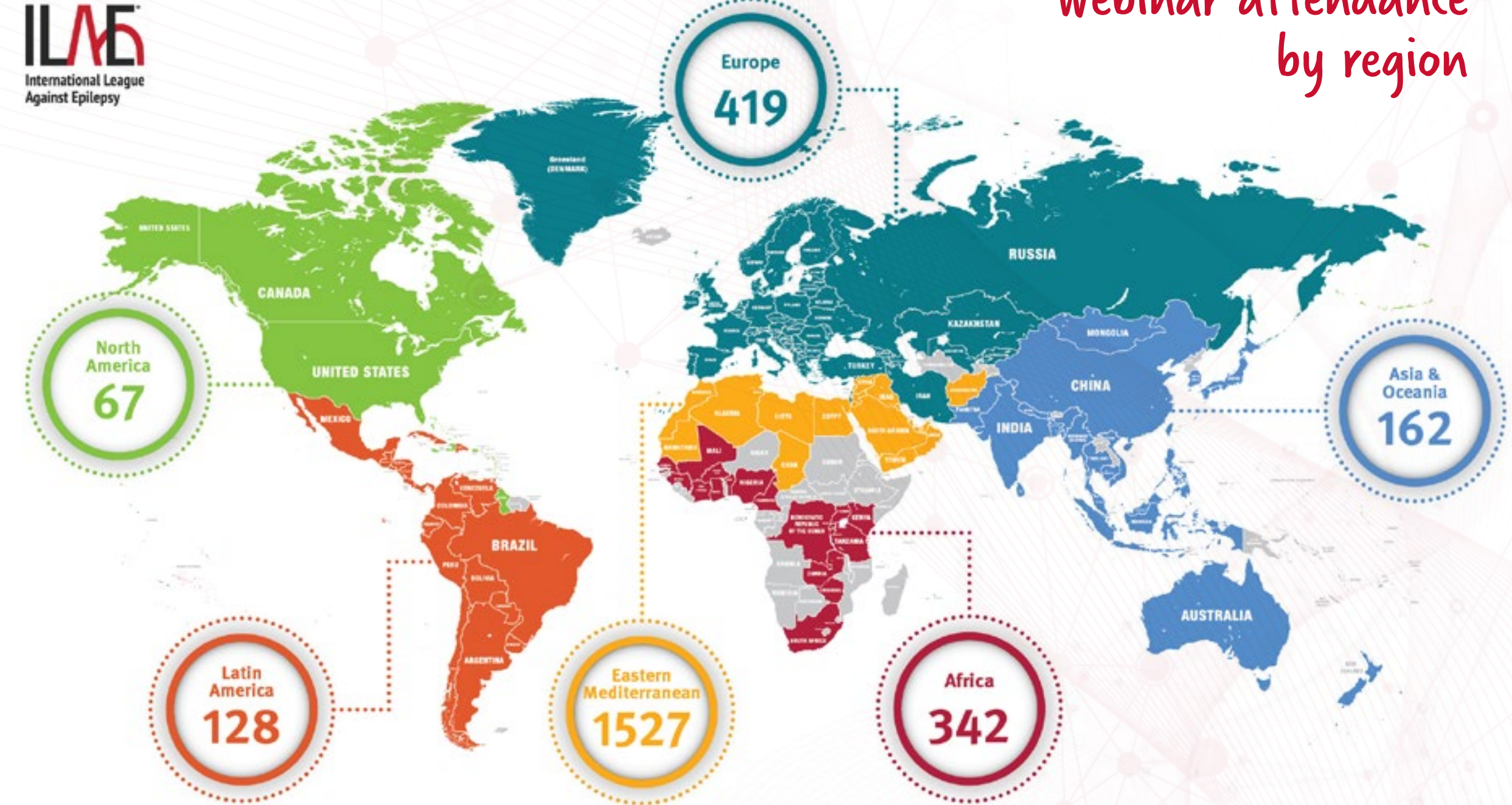
Education & Training

Webinars

The Africa and Eastern Mediterranean regions of ILAE hosted 21 webinars in 2021 that attracted more than 2,600 viewers altogether. Webinars were hosted in both French and English and attendees joined in from across the globe.

Topics included:

- Post-traumatic epilepsy
- Vaccinations and epilepsy
- Epilepsy stigma in the Eastern Mediterranean region
- Sleep and epilepsy
- The gut biome and epilepsy
- Epilepsy surgery in children



e-Forum series planned for 2022

ILAE has planned a four-session educational e-Forum series that will take place in 2022. Each session features experts covering a topic in depth, as well as time for Q&A:

- Rescue medications for seizures and status epilepticus
- Cannabinoids
- Drug interactions
- Selecting the first anti-seizure medication

These are free events that include access to a preparatory manuscript, registration for the virtual forum, a post-forum virtual networking session, and access to a self-paced virtual case study to consolidate learning.



Publications & Communication

Journals



Epilepsia

Epilepsia

Impact factor of 5.866

Ranked #32 of 208 journals in the Clinical Neurology category

1 in 4 submissions was accepted for publication

3.02 million article downloads in 2021, an 8% increase from 2020



Epilepsia Open®

Epilepsia Open

The journal's first official impact factor is expected in 2022, but it has been listed with a tentative two-year impact factor of 3.5

Submissions increased 23% in 2021, and the number of published articles increased by 79%

78% of published articles were original research

185,200 article downloads in 2021, a 50% increase from 2020



Epileptic Disorders

Epileptic Disorders

Impact factor increased to 1.819, from 1.276 in 2020

Submissions increased 61%

Number of downloads and homepage visits nearly doubled, compared with 2020

The journal is gaining a reputation as an important educational resource



INTERNATIONAL LEAGUE AGAINST EPILEPSY ILAE®
Established 1909
Epigraph

Epigraph

21 articles and podcast episodes, many in multiple languages (English, Spanish, French)

More than 75,000 visits to Epigraph pages on the ILAE website

Since Summer 2018, more than 90 Epigraph articles have been posted on Newswise, a news distribution service for journalists and the interested public. The articles have received more than 660,000 views.

Podcast



Sharp Waves

The ILAE podcast, available on all major podcast platforms, was officially launched in November 2021 and covers clinical, research, and sociocultural issues in epilepsy.

Website



www.ilae.org

Site visits more than doubled in 2021, compared with 2020, with 1.27 million visits and 984,000 unique visitors. Page views increased by 62%, with 2.22 million pages viewed in 2021.

About 57% of this year's traffic was to COVID-19-related pages, compared with 16% in 2020. Traffic to other pages also increased.

Wikipedia



Wikipedia Project

In 2021, edits were made to 30 Wikipedia articles, and ILAE created a "Wikipedian in Residence" position, as well as an internship aimed at young contributors.

Social Media



YouTube

20,900 views

957 hours watched



Facebook

17% growth in followers to 12,096

382 posts reaching 810,000

Top countries: USA, Mexico, Egypt, Brazil, India



Instagram

52% growth in followers to 2,150

261 posts reaching 115,000

Top countries: Brazil, Argentina, USA, Colombia, Turkey

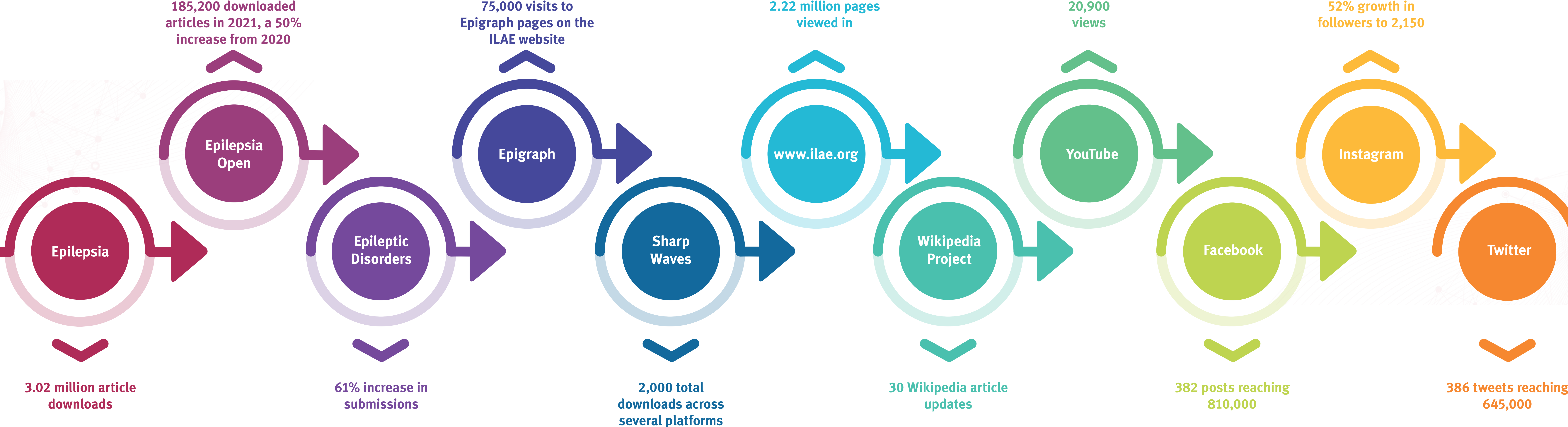


Twitter

30% growth in followers to 6,625

386 tweets reaching 645,000

Success at a Glance





2nd North American Epilepsy Congress

2022 | Virtual

#NAEC2022

[LEARN MORE](#)



14th European Epilepsy Congress

9-13 July 2022 | Geneva, Switzerland

#EEC2022

[LEARN MORE](#)

Congresses



XII Congreso Latinoamericano de Epilepsia

1-4 October 2022 | Colombia

#LAEC2022

[LEARN MORE](#)



14th Asian & Oceanian Epilepsy Congress

November 2022 | Virtual

#AOEC2022

[LEARN MORE](#)

Congresses

congress tweets



The ILAE held three virtual congresses this year: the Latin American Epilepsy Congress in February, the Asian-Oceanian Epilepsy Congress in June, and the International Epilepsy Congress in August.

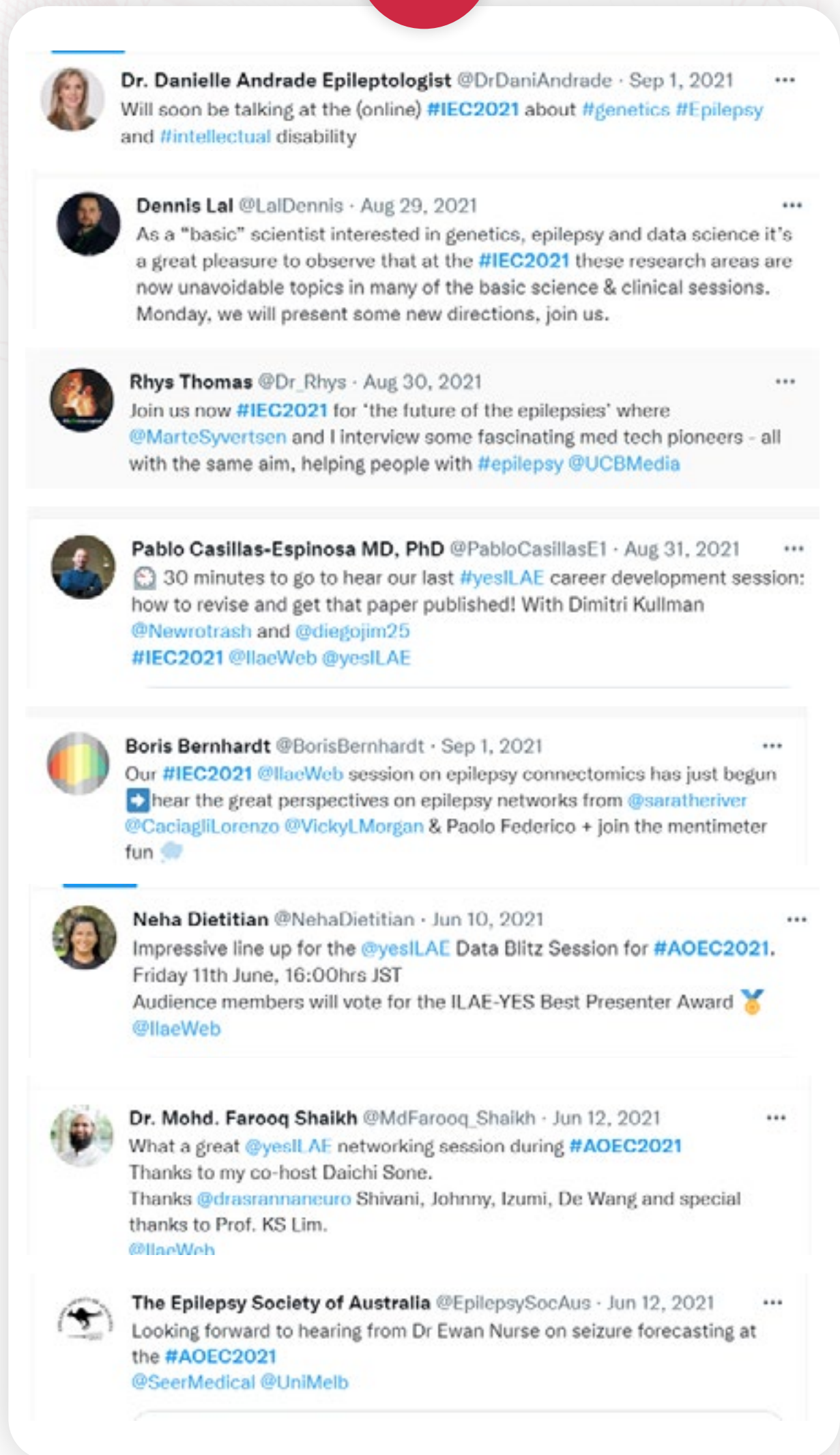
About 4,000 people attended one or more of these congresses, and feedback was overwhelmingly positive! In addition, sponsorship was maintained at about 80% of what would be expected from in-person congresses.

Registration fees were reduced to account for the virtual nature of the congresses, as well as to improve access for professionals in resource-constrained settings.

Even with this reduction and all congress costs – direct, indirect, and legacy – the year still ended with a small surplus.

In 2021, ILAE was able to:

- Finalize a set of **congress guidelines**
- Agree to five **congress models** to explore further as a means of expanding our offerings to better meet the needs of different regions
- Develop a clear **budget framework** and process for budget approvals and contract reviews
- Introduce a **project management** system to improve planning, analysis and oversight
- Understand the key risks and opportunities through the development of a **congress risk register**
- Agree on the type of **virtual attendance** we hope to achieve in hybrid congresses
- Investigate different **virtual platforms** for fully virtual and hybrid congresses and develop selection criteria
- Begin to understand better what our **stakeholders** wish from congresses and areas for development
- Establish better coordination of our congress **promotion and marketing** activities and expand use of social media and other digital technologies



Latin American Epilepsy Congress 2021
300 attendees from 20 countries and
3 ILAE regions



Asian-Oceanian Epilepsy Congress 2021
635 attendees from 40 countries and
5 ILAE regions



International Epilepsy Congress 2021
2,300 attendees from 109 countries
and all 6 ILAE regions

A group of business professionals in a meeting. A woman in the foreground is pointing at a whiteboard with several sticky notes. Other people are visible in the background, looking on. The image has a red overlay.

Nurturing Leaders

Nurturing Leaders

A crucial part of ILAE's engagement activities revolve around younger members – the next generation of international epilepsy leaders and experts.

Our Leadership Development Program, started in 2015, gives younger members a unique opportunity to receive leadership training, guidance and support in conjunction with attending one of ILAE's congresses. Each program accepts about 30 people.

In 2017, we established the ILAE Mentor/Mentee Program, matching trainees with mentors in their area of clinical or research interest.

In 2018, the ILAE Young Epilepsy Section (YES) held an organizational meeting in London, attracting interested members from around the world. Since then, YES has grown to more than 800 members and established national chapters in several countries.



Nurturing Leaders

Officers and representatives of the Young Epilepsy Section (YES)



Yamile Calle-López
Chair



Cristina Ruedell Reschke
Treasurer



Sebastián Ortiz-De la Rosa
Vice Chair



Marian Galovic
Past Chair



Pablo Casillas-Espinosa
Secretary

Regional representatives



Naluca Mwendaweli
Africa



Ajay Asranna
Asia & Oceania



Reem Alyoubi
Eastern Mediterranean



Luca de Palma
Europe



Diego Jimenez-Jimenez
Latin America



Ruta N Yardi
North America

Nurturing Leaders

2021 Accomplishments

In 2021, YES continued the webinar project initiated at the onset of the pandemic in 2020. The group produced 16 webinars on diverse topics, including the ketogenic diet, strategies for epilepsy advocacy, anxiety in people with epilepsy, neuro-epidemiology and interpreting intracranial recordings. Overall, YES has produced more than 40 educational webinars that have attracted more than 17,000 views.

YES has formalized a procedure for establishing national chapters affiliated with ILAE chapters. This provides an opportunity to focus on local issues that cannot be adequately addressed at an international level. Several chapters have organized or co-organized conferences aimed at young people in their regions.

Other educational initiatives:

Educational pocket cards – concise reviews of subjects of interest, such as anti-seizure medications or managing epilepsy in pregnant women

Several members have begun involvement with the ILAE podcast Sharp Waves, receiving training in how to prepare for and conduct interviews with clinicians and researchers about hot topics in epilepsy

Collaboration with EEG Talk, a USA-based account on social media that aims to make EEG education more accessible

Collaboration with Epilepsy Sparks, a UK-based advocacy organization; YES members are interviewed for the organization's podcast, allowing them to showcase their research, discuss their careers, and talk about concerns specific to their regions

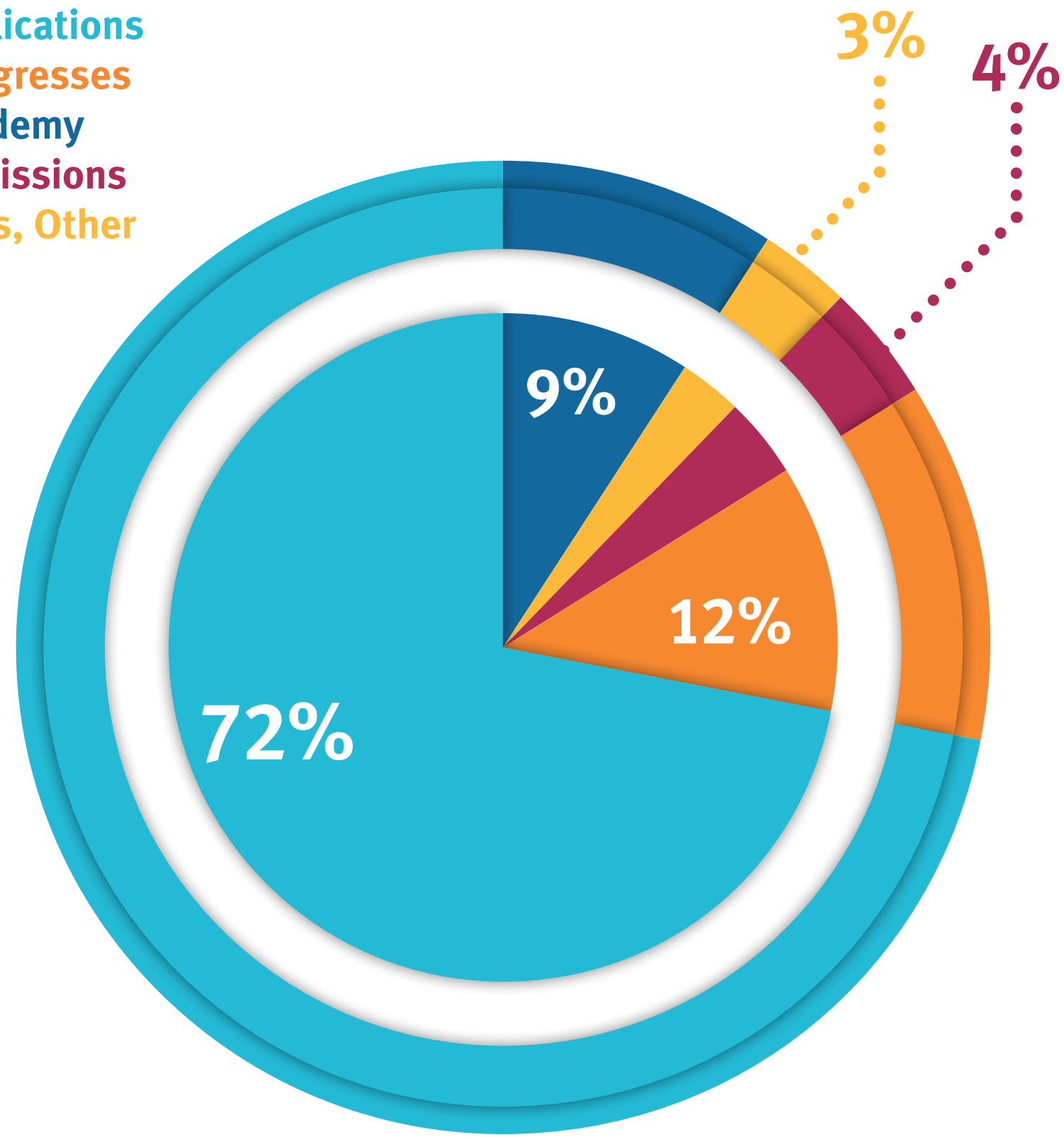


Financials



Financials

Publications
Congresses
Academy
Comissions
Dues, Other



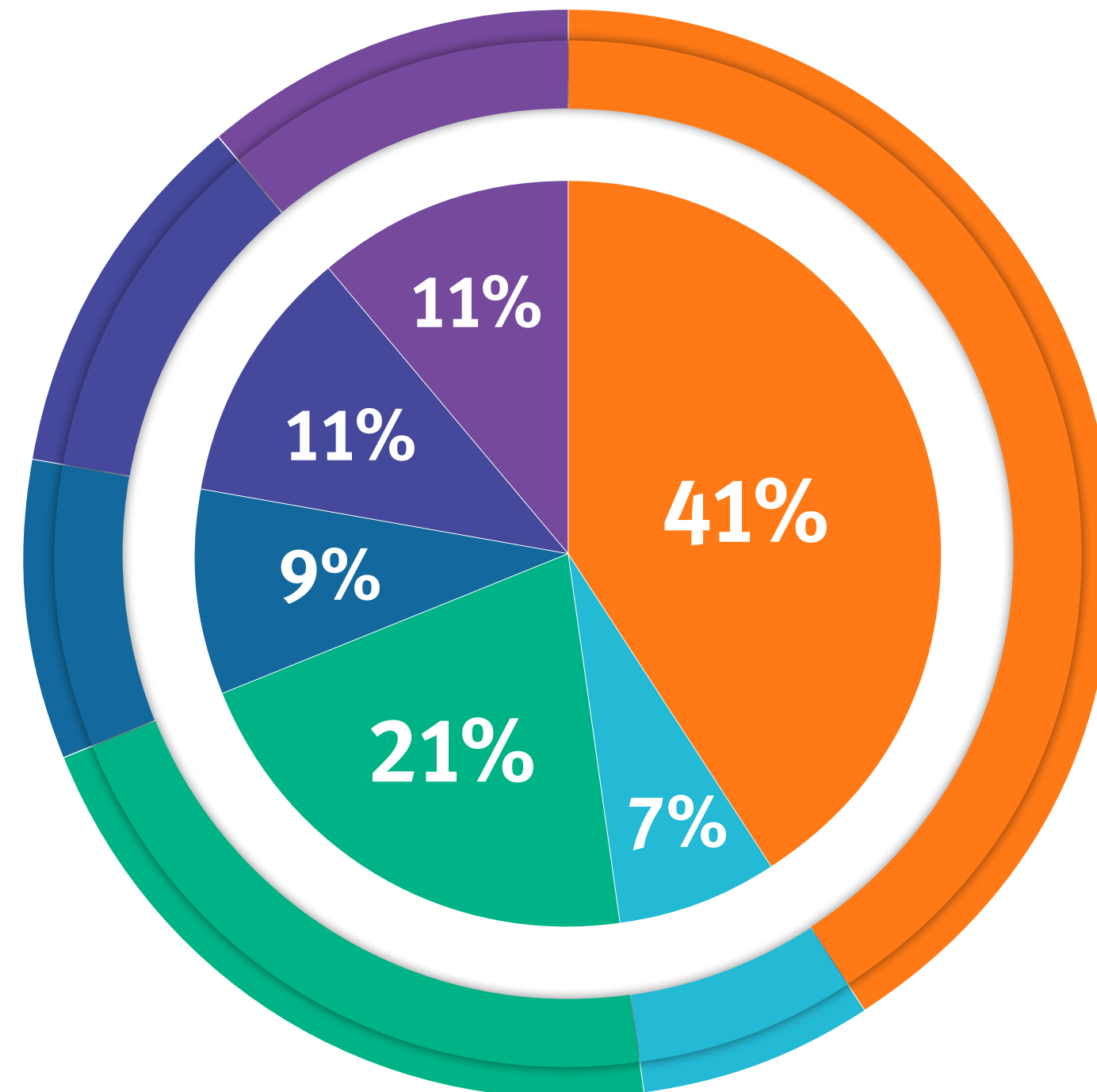
Operational Revenue 2020

Despite the 2020 impact of the COVID-19 pandemic, ILAE's financial standing remained sound. Total assets increased by \$1.7 million in 2020. At the end of 2020, ILAE's endowment stood at \$23.6 million, above target.

The cancellation of in-person activities led to fewer financial expenditures in 2020 and into 2021, which helped offset the bottom line. As much as congresses were impacted by the pandemic, the delivery of virtual congresses proved profitable.

In 2020, major sources of revenue continued to be journal royalties, which made up 72% of total revenue. Net congress surplus was the second largest source of revenue.

Administration
Publications
Academy
Comissions
Congresses
Other Programs



Operational Expenses 2020

Following the formation of ILAE Secretariat in 2020, ILAE staff is continuously working on consolidating the financial activities, systems, and processes as a unified organization.

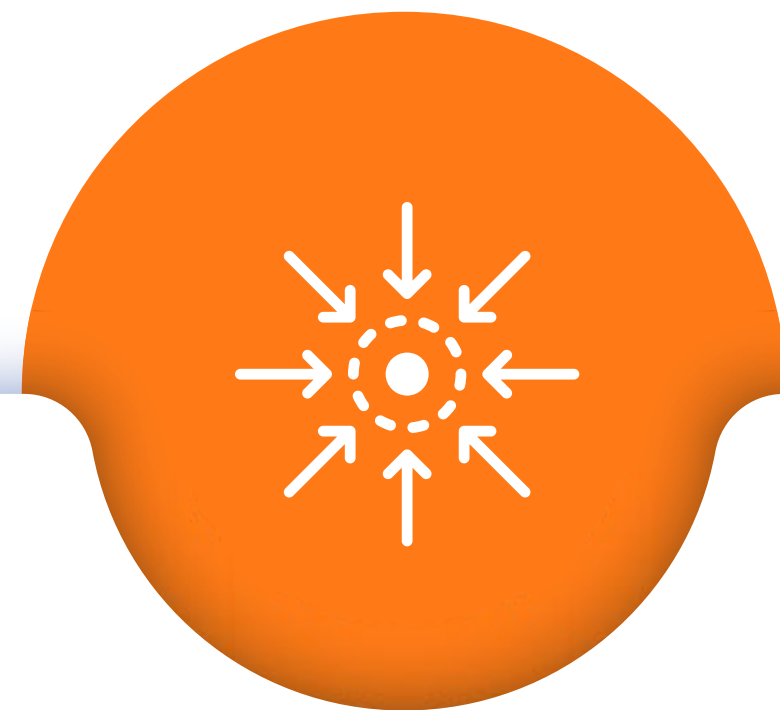
In 2021, the organization produced its first ever consolidated Auditors Review report for fiscal year 2020.



Guiding Principles

Guiding Principles

ILAE is working toward a world where no person's life is limited by epilepsy. Everything we do aligns with this vision, which is supported by a 10-year Strategic Plan and five guiding principles:



IMPACT

We strive to achieve international, enduring impact for individuals and communities affected by epilepsy

To achieve this, we must take a long-term view, tackling both the root causes of epilepsy, as well as the health and social consequences. And we must continually endeavor to be flexible, take appropriate risks and make our actions sustainable.



COOPERATION

We collaborate to generate shared outcomes

We recognize that we cannot achieve the impact needed by working alone. We must foster mutual collaborations with health care professionals, individuals, and communities affected by epilepsy, the public, governments, and other groups. We value others' ideas, time, needs and goals.



EXCELLENCE

We take a holistic and scientific approach to developing best practices

We must keep ourselves well informed if we are to make the best decisions. We must evaluate ideas in terms of their inherent value, not their origin. And we must continually challenge our assumptions and seek out and listen to multiple points of view.



INTEGRITY

We aspire to the highest standards of conduct

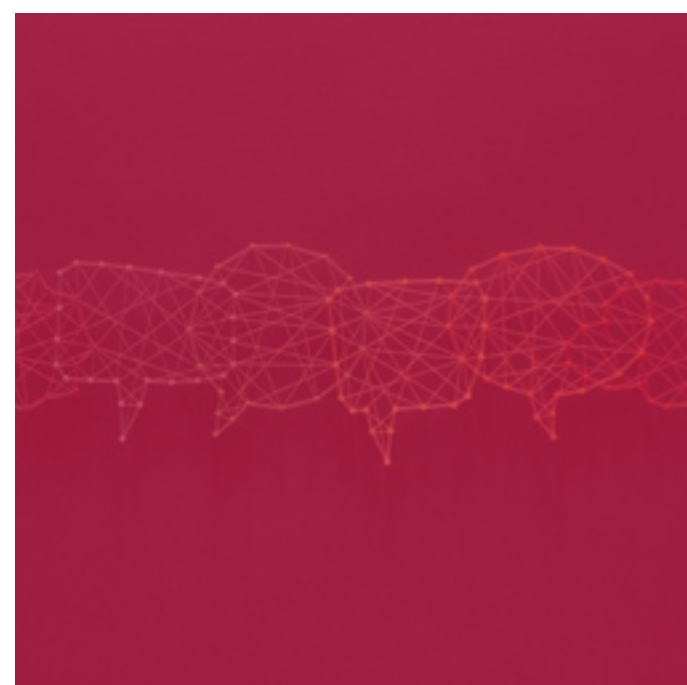
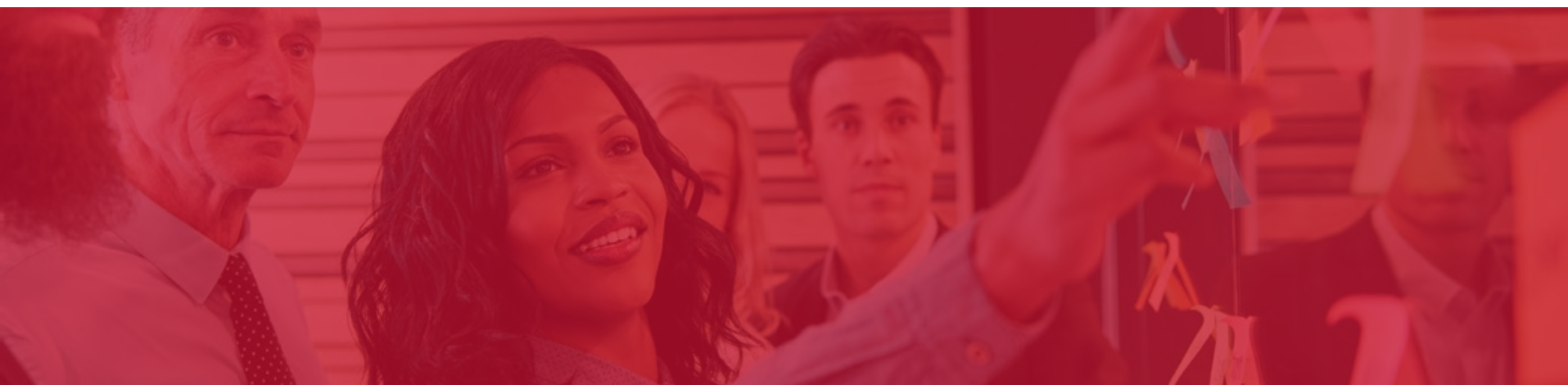
We recognize that to achieve this we must communicate honestly, clearly and transparently. We must be good stewards of our human and fiscal resources. And we must continually hold ourselves to the same standards we ask of others.



INCLUSION

We work with all who strive for a world where no life is limited by epilepsy

Above all, we recognize that to stay true to our mission and achieve all that we set out to do, we must ensure that there is no place for bias or discrimination in our organization. There must though be a place for all – as equals, supported and respected.



International League Against Epilepsy

ILAE Headquarters: 2221 Justin Rd., Suite 119-352, Flower Mound, TX, 75028, USA



To read full versions of annual reports from councils, commissions, and the Executive Committee, visit our [annual reports page](#)



www.ilae.org/reports